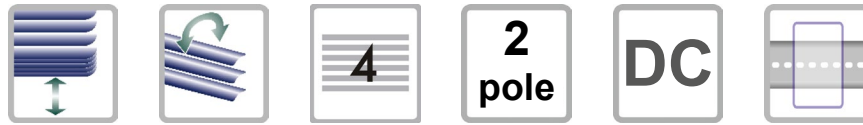


# ST2121

## Blind Control Module DC



The Blind Control Module DC was especially developed for the control of blinds in insulating glass.

The connected blinds are controlled via a 2-pole electronic output by pole reversal. Up to 4 blinds can be connected to the output and operated in one control group.

The specific control characteristics of the ScreenLine MB blinds are especially supported when controlling the output.

The user interface with visual and acoustic feedback can be used both to control the blind group for testing purposes and to make essential settings for the ST2121.

The configuration of the module can be performed conveniently via a configuration interface on the front of the device using a notebook and the *CTS Configuration Tool Software for Controls* application.

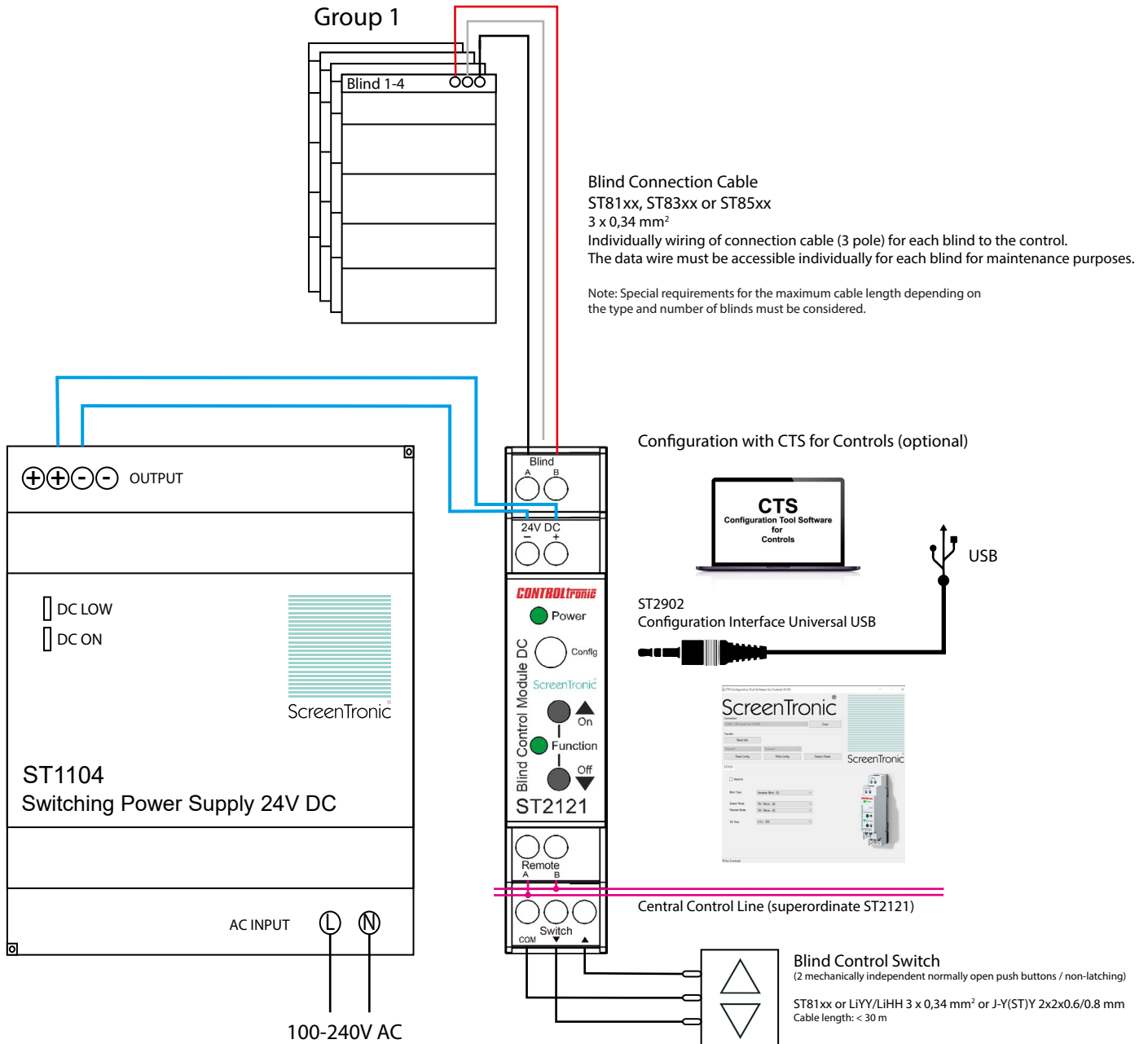
A local push button input and a potential-separated central control input (remote) enable convenient blind operation.

Alternatively, one of the two inputs can be used as an enable input from a window contact.

### Product Features

- Operation and configuration directly at the front of the device (2 push buttons and 2 RGB LEDs)  
optionally configurable via the interface on the device front using the Windows application *CTS for Controls* (ST2902 required)
- Operating modes:
  - Venetian blind
  - Venetian blind tilt only
  - Roller shutter / Pleated blind
  - Master (superordinate control / Attention: no direct blind connection allowed)
- Electronic switching output  
short time short-circuit-protected
- Local push button input for blind operation  
alternatively usable as enable input (window contact)
- Remote central control input (electrically isolated)  
for superordinate control module (e.g. central control group) or alternatively usable as enable input (window contact)
- Supply voltage: 24V DC SELV +/- 5%
- Output load: max. approx. 1.8 A / max. approx. 2.5 A (peak)  
for SL MB blinds with integrated SC electronic and BLDC motor up to 4 blinds

# ST2121 Blind Control Module DC



Connection	Description	Comments
Blind A	Blind Control Output A	Blind Connection (max. 4 Blinds SL MB)
Blind B	Blind Control Output B	
24V DC -	GND	Power Supply 24V DC (load dependent ST1102, ST1104 or ST1108)
24V DC +	+24V DC	
Remote A	Remote A	Central Control Input 24V DC (superordinate control module) alternativ: Enable Input (potential-free window contact)
Remote B	Remote B	
Switch COM	Push Button COM	Blind Control Push Button (potential-free) alternativ: Enable Input (potential-free window contact)
Switch ▼	Push Button Down	
Switch ▲	Push Button Up	

Dimensions	Designation	Order Number
DIN rail 1 module	Blind Control Module DC	ST2121
18 x 90 x 61 mm (W x H x D)		